

**The GEZE door family for Nemetschek Allplan:
5 elements for complete door planning**

Greater planning security with little effort: All the doors in a building can be planned extremely easily using GEZE BIM projects. Because the GEZE solution enables everything to be displayed using just five multifunctional doors – from swing and sliding doors through to revolving doors. GEZE BIM projects are compatible with the CAD program Nemetschek Allplan by version 2016, so that planners can generate their door schedule / element list directly. The GEZE solution is also available for Graphisoft Archicad and Autodesk Revit.

About GEZE

GEZE develops, manufactures and sells system solutions for door, window and safety technology and is one of the global market leaders. GEZE safety technology is crucial wherever preventative fire protection, protection against theft along escape and rescue routes or access control are concerned. Tailored solutions combine individual safety requirements in one intelligent system so that doors and windows are opened and closed in a coordinated way in an emergency.

With customised service packages, GEZE Service accompanies your products throughout their whole life cycle and guarantees durability and safety.

We will be happy to provide further information if required and look forward to hearing from you!

GEZE GmbH
 Reinhold-Vöster-Str. 21-29
 71229 Leonberg
 Germany
 Telephone: +49 (0) 71 52-203-0
 Fax: +49 (0) 71 52-203-310
 E-mail: info.de@geze.com
 www.geze.com



GEZE BIM PROJECTS FOR ALLPLAN

GREATER PLANNING SECURITY – QUITE SIMPLY!

ID no. 178352 - Vers. EN 1612 - Subject to change



BEWEGUNG MIT SYSTEM

Design and realise construction projects: simply, quickly and securely

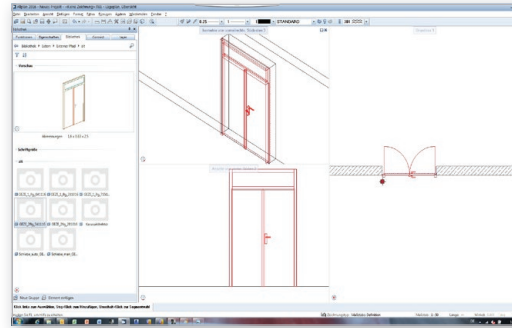
Building Information Modeling (BIM) is a method of innovative building planning that uses digital building models – from planning and implementation through to operation and possible demolition. BIM allows buildings to be designed, modelled, optimised and simulated. During this process, all relevant building data is recorded, combined and networked. And all that in just one 3D model which all involved parties can work on jointly.

Advantages of virtual construction with BIM:

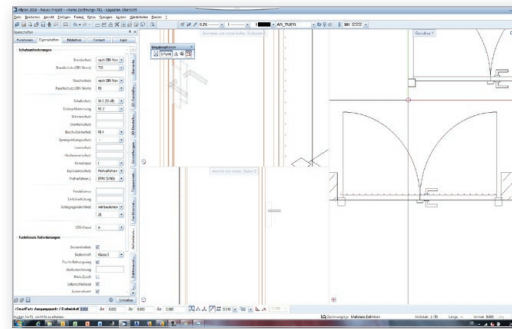
- better exchange of information among all involved parties
- increased productivity
- earlier error detection and rectification
- more planning and cost security

GEZE BIM door projects: Advantages at a glance

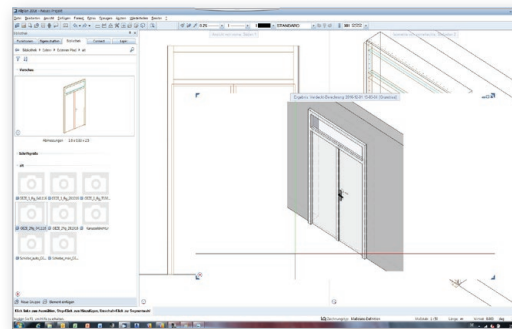
- generate all door solutions with just 5 door types
- simple and easy to use
- can be used at every stage of the project
- complete depiction possible in 3D
- complete lists of elements at the push of a button
- compatible with the most common CAD programs
- can also be used offline



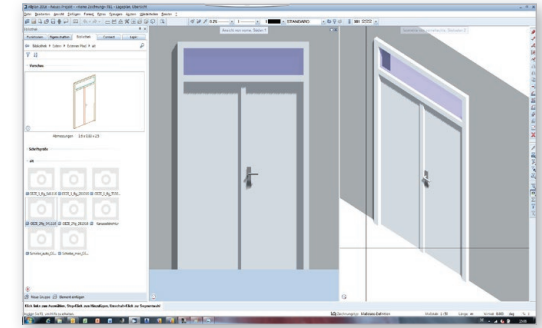
1. Open BIM project



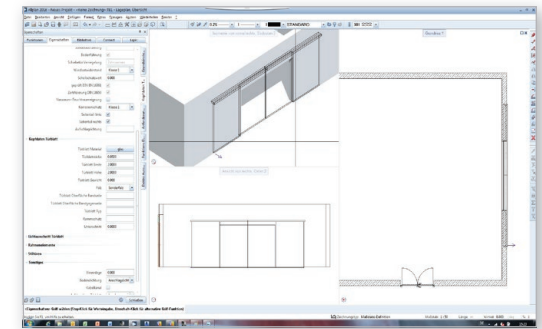
2. Determine the parameters



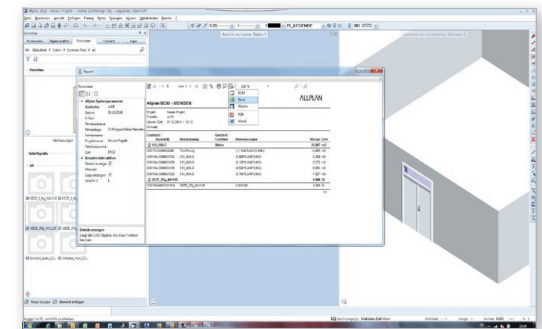
3. Insert the door



Elevation



3D illustration



Creating of door schedules / element lists